

BAKERY MERCHANDISING SOLUTIONS

The foodpros.com bakery case solutions: protect your bakery offerings while enabling the product to shine through to your customers!

STANDARD FEATURES

- Clear acrylic doors for easy visibility.
- Set of pricing decals – your choice in retail.
- Front-loading for easy stocking of products.
- Mirror back panel with LED shelf-lighting.
- Heavy-duty wire racks.

OPTIONAL

- Different graphics package to add visual appeal for customers.
- Tissue box base for countertop units (built-in when ordering Floor-Standing).
- Full-size trays.

This front-loading, self serve bakery case is constructed of black high density polyethylene (HDPE). The clear acrylic doors hinge at the top of each shelf area, safely protecting your bakery offerings, while enabling your product to shine through to your customers. The sides also include clear acrylic panels, allowing for additional visual appeal. The mirror back panel includes LED light strips to illuminate each shelf; a standard 120V electrical outlet is required.



TECHNICAL SPECS & SHIPPING INFORMATION

ITEM	UNIT DIMENSIONS IN INCHES			UNIT WEIGHT IN LBS.	SHIPPING DIMENSIONS IN INCHES			SHIPPING WEIGHT IN LBS.
	WIDTH	HEIGHT	DEPTH		WIDTH	HEIGHT	DEPTH	
NARROW	19.5	28	19.125	38	32	34	32	68
NARROW WITH TRAYS	19.5	28	19.125	42	32	39	32	74
NARROW WITH BASE	19.5	36	19.125	56	32	49	32	90
NARROW WITH TRAYS & BASE	19.5	36	19.125	60	32	49	32	96
NARROW TISSUE BOX BASE	19.5	8	19.125	18	21	10	21	21
WIDE*	27.125	28	23.5	54	32	34	32	82
WIDE WITH TRAYS*	27.125	28	23.5	64	32	38	32	96
WIDE WITH TISSUE BOX BASE*	27.125	36	23.5	93	32	43	32	114
WIDE WITH TRAYS & BASE*	27.125	36	23.5	103	32	48	32	128
WIDE TISSUE BOX BASE	27.125	8	23.5	29	25	10	28	32
FLOOR*	27.125	61.8	23.5	128	32	68	32	160
FLOOR WITH TRAYS*	27.125	61.8	23.5	142	32	72	32	172
TRAYS, SET OF 3 FOR NARROW	18	1	14	5	16	6	20	6
TRAYS, SET OF 3 FOR WIDE	26	1	18	10	20	4	26	13
TRAYS, SET OF 4 FOR FLOOR	26	1	18	14	20	4	26	17

*Typically ships via freight with liftgate service; under certain circumstances, may be shipped as a package with smaller shipping dimensions and weight.

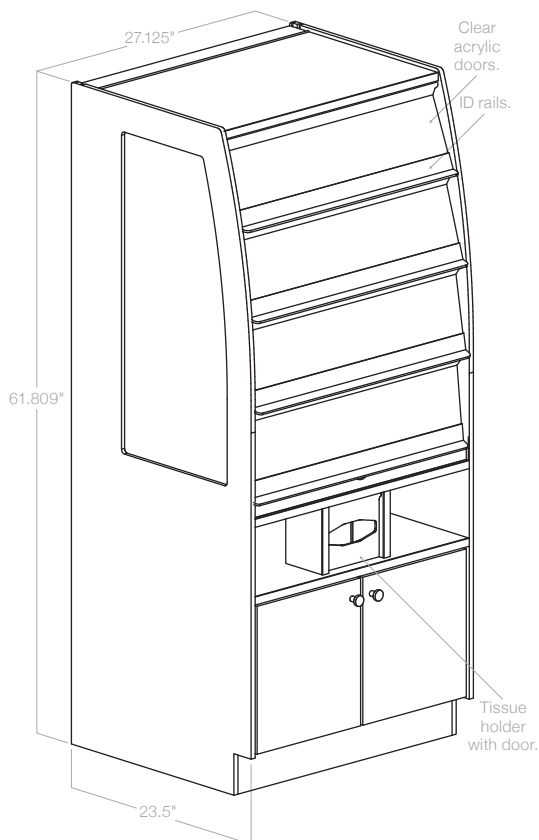


foodpros.com



FOOD
CONCEPTS
INC.

FLOOR-STANDING



SKU

- FP-BC2-FLR-MIR

DIMENSIONS

- 27.125"W x 61.8"H x 23.5"D

DIMENSIONS

- 120 V

OPTIONAL

- Different graphics package to add visual appeal for customers.
- Tissue box base for countertop units (shown below with wide and narrow units). Tissue holder fits boxes up to 6.25"W x 6"H x 2.875"D; includes space for bags.
- Full-size trays.
Trays for Narrow: 18.25"W x 14"D, each.
Trays for Wide or Floor-Standing: 18.25"W x 14"D, each.



WIDE CASE WITH BASE

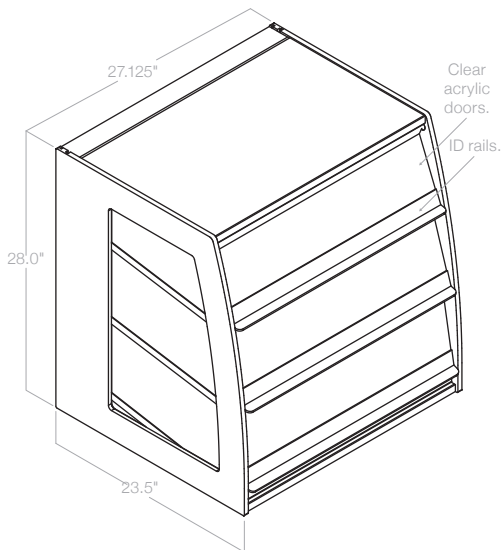


NARROW CASE WITH BASE

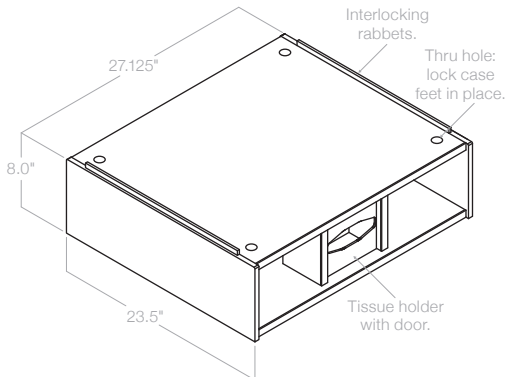


BAKERY TRAY (WIDE)

WIDE COUNTERTOP



OPTIONAL TISSUE BOX BASE



SKU

- FP-BC2-CTW-MIR

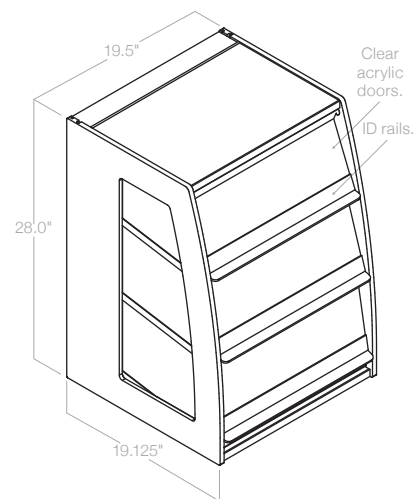
DIMENSIONS

- 27.125"W x 28"H x 23.5"D

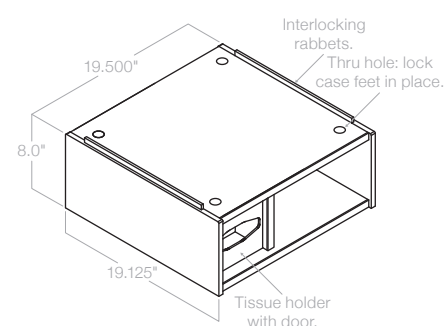
DIMENSIONS

- 120 V

NARROW COUNTERTOP



OPTIONAL TISSUE BOX BASE



SKU

- FP-BC2-CTN-MIR

DIMENSIONS

- 19.5"W x 28"H x 19.125"D

DIMENSIONS

- 120 V

PREMIUM LED PANEL VERSION

- Innovative LED technology.
- Same dimensions and standard features as the mirror back panel version.
- Fills the case with even, warm light.



PREMIUM LED PANEL WIDE CASE, SHOWN WITH BASE



foodpros.com



FOOD
CONCEPTS
INC.